

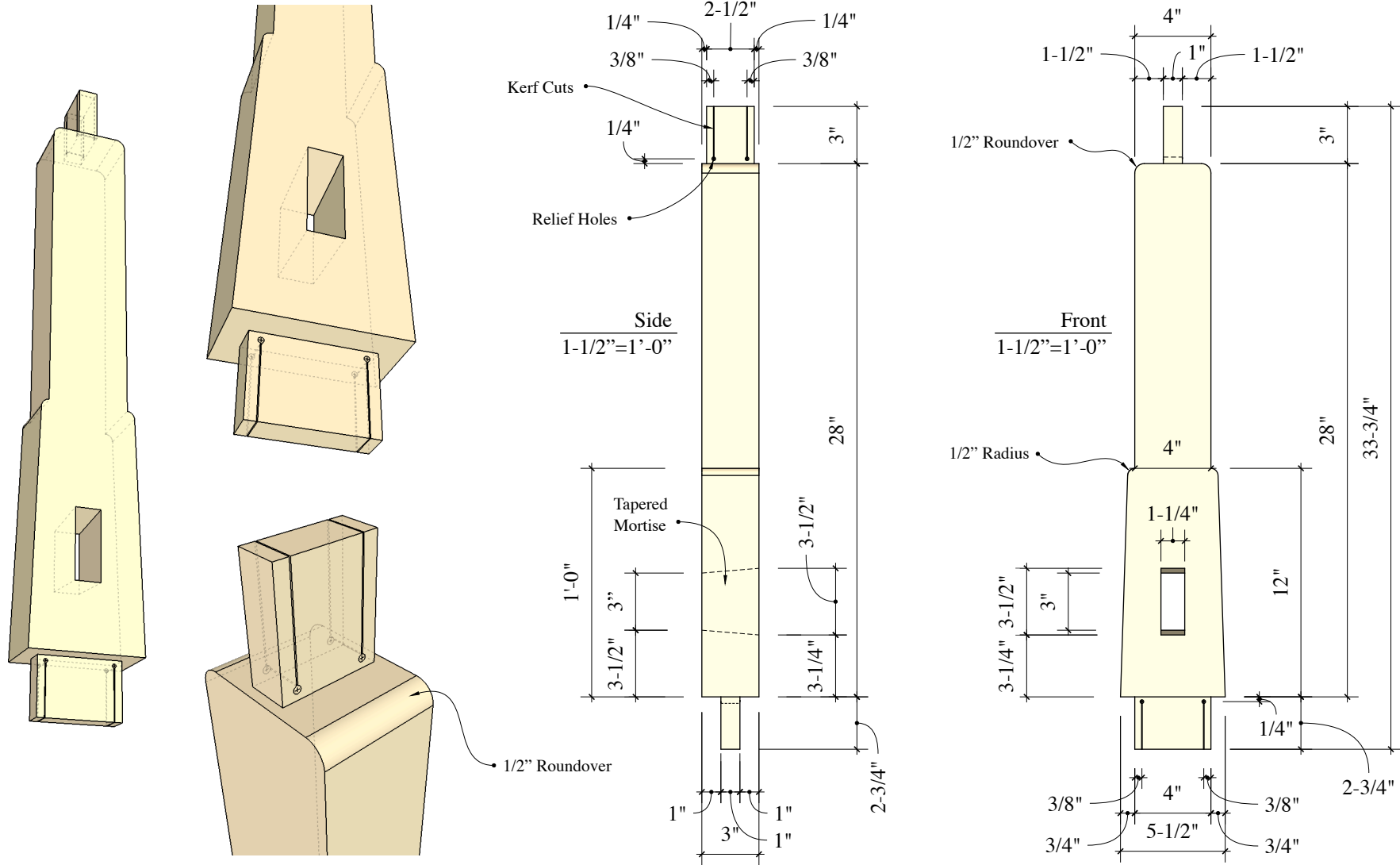
NOTE: Due to the style of joinery used in this project, glue is not necessary if joints are tight. Glue can be used if desired.

### Materials

QTY	Rough Dimensions	Rough Length	Finish Dimensions	Finish Length	Notes
4	3-1/2" x 5-1/2"	3'-0"	3" x 5-1/2"	2'-9-3/4"	Vertical Legs
2	2" x 3-1/2"	3'-0"	1-3/4" x 3-1/2"	2'-8"	Trestle (*Note: 1-3/4" Finish Dimension)
2	3-1/2" x 3-1/2"	4'-0"	3-1/2" x 3"	3'-6"	Top
4	3-1/2" x 3-1/2"	2'-0"	3-1/2" x 3-1/2"	1'-6"	Feet
24	2" x 2"	2'-0"	Taper 0"-1/2"	6"	Hardwood Wedges

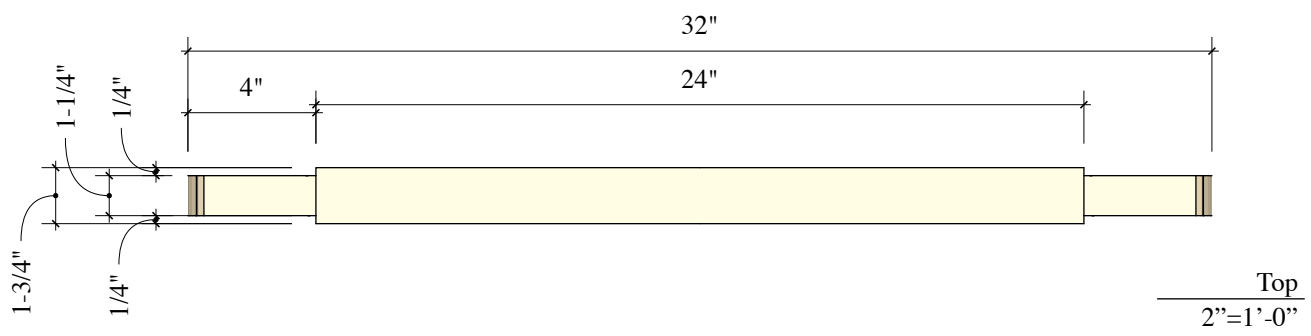
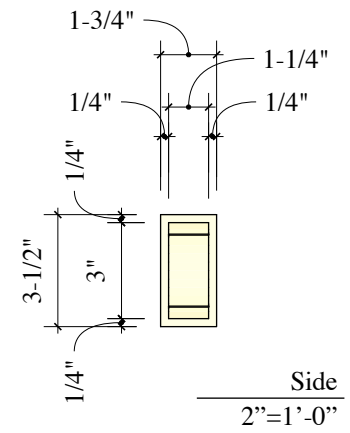
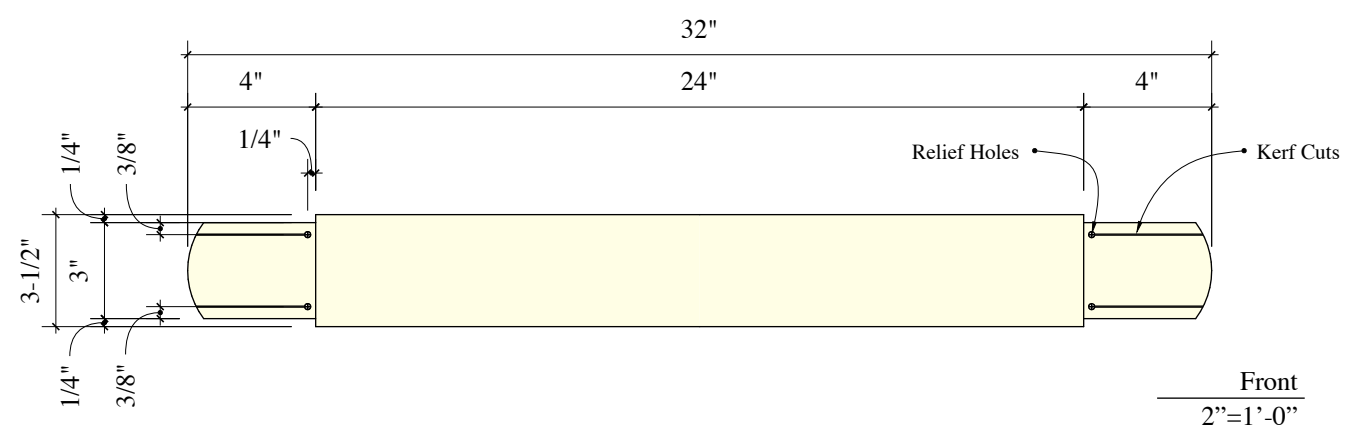
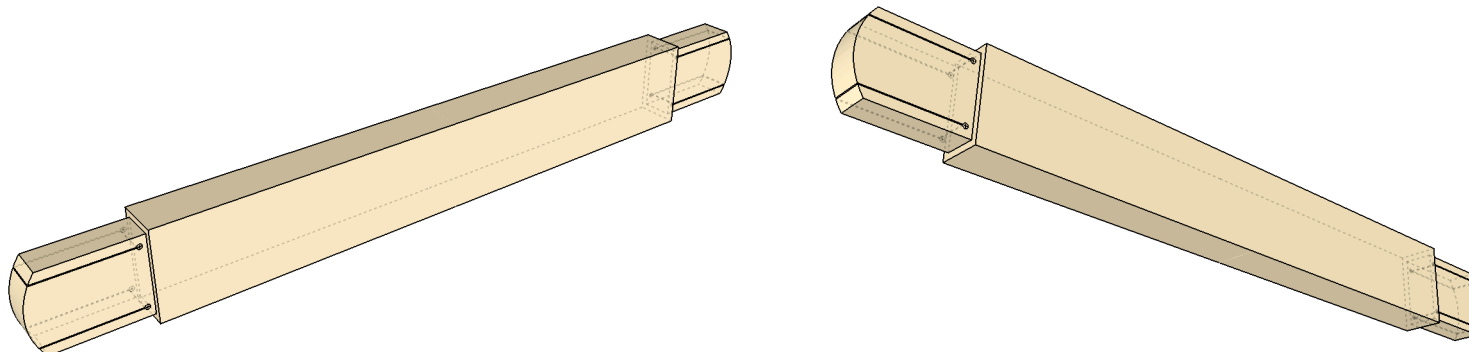
### Tools

Table Saw                      Router  
 Miter Saw                     Drill  
 Band Saw                      Hand Tools  
 Thickness Planer



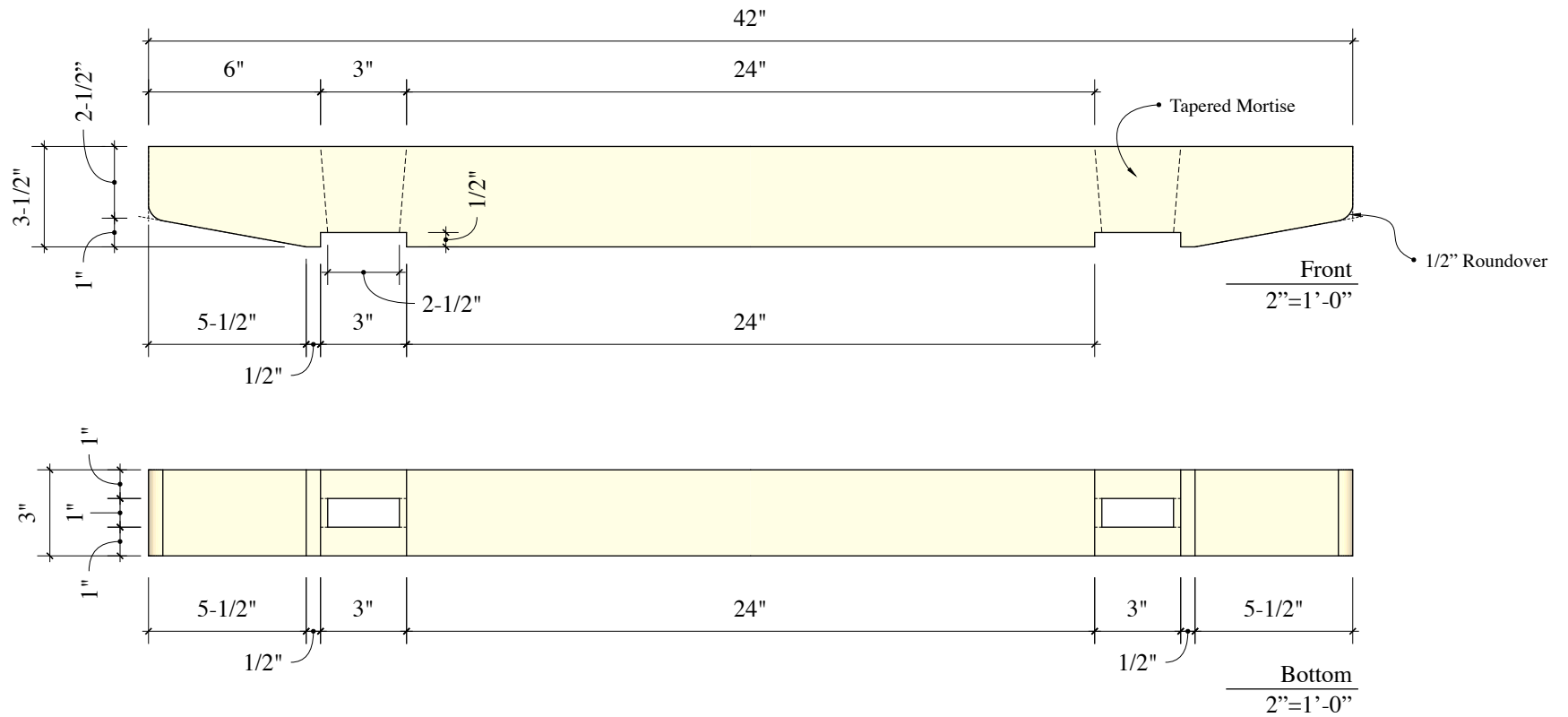
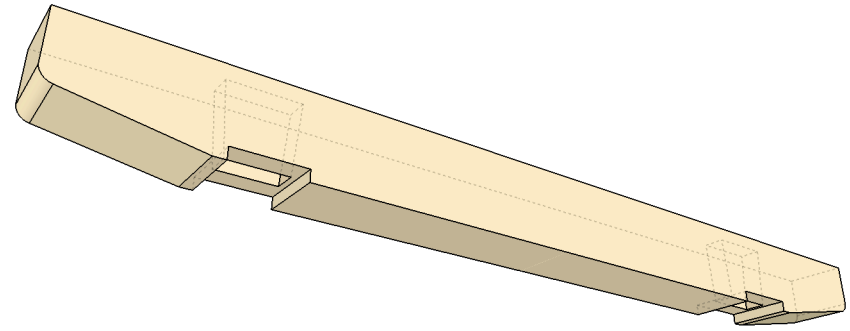
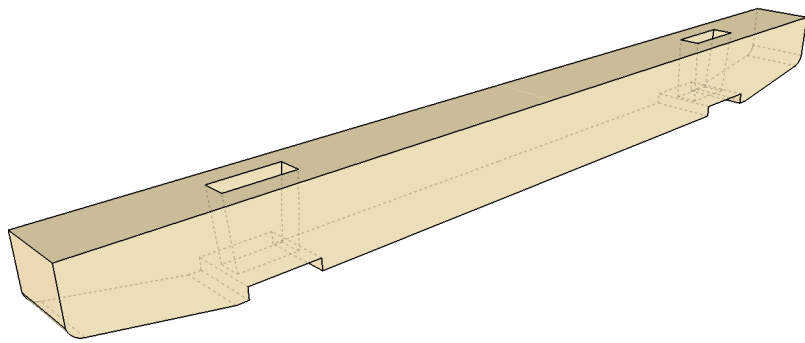
**Notes: Legs - 4 Pieces**

1. Kerf cuts should be approximately 3/8" from edge of tenon.
2. Drill 3/16" holes approximately 1/4" from shoulder as a relief for the kerf cuts.
3. Use 1/2" roundover bit at top shoulder as shown.
4. Ease all edges (not mortises, tenons or shoulders) with 1/8" roundover bit.
5. NOTE: Mortises are tapered as shown. Wedges driven into kerfs during assembly will tighten joint.



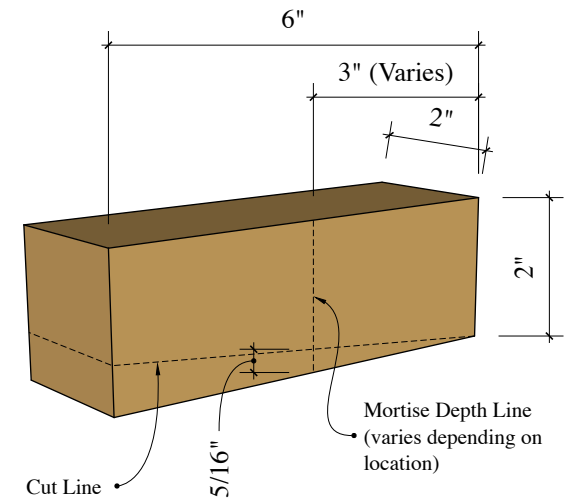
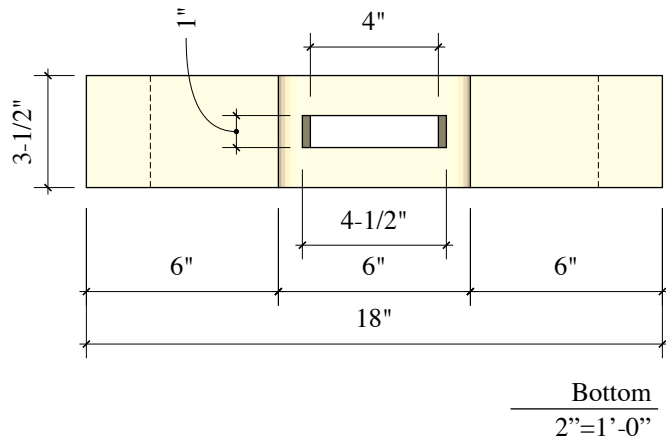
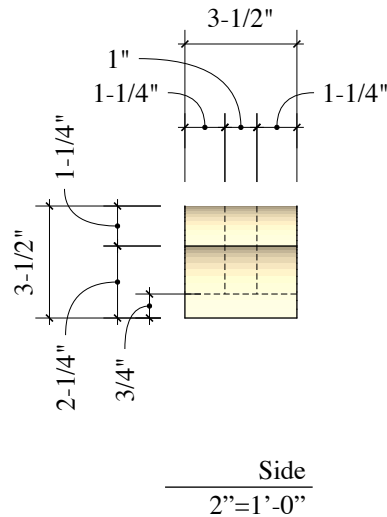
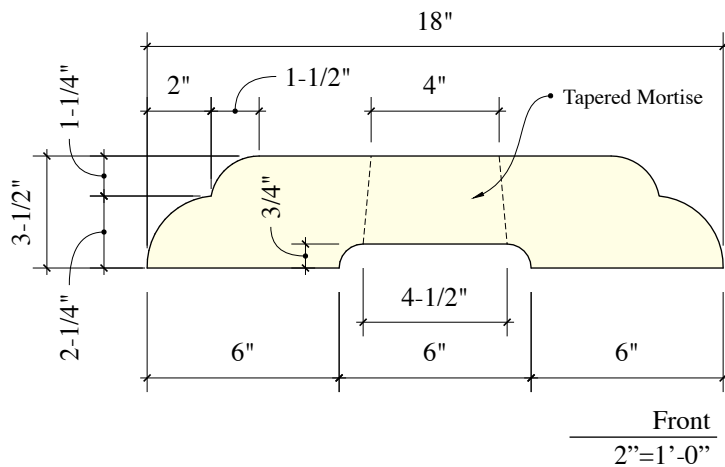
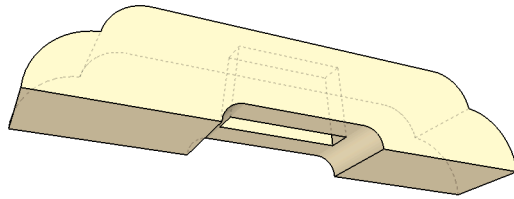
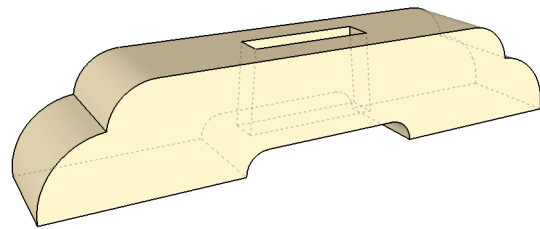
**Notes: Trestle - 2 Pieces**

1. Kerf cuts should be approximately 3/8 from edge of tenon.
2. Drill 3/16" holes approximately 1/4" from shoulder as a relief for the kerf cuts.
3. Ease all edges (not mortises, tenons or shoulders) with 1/8" roundover bit.



**Notes: Top - 2 Pieces**

1. Use 1/2" roundover bit at bottom corners as shown.
2. Ease all edges (not mortises, tenons or shoulders) with 1/8" roundover bit.
3. NOTE: Mortises are tapered as shown. Wedges driven into kerfs during assembly will tighten joints.



**Notes: Feet - 4 Pieces**

1. Ease all edges (not mortises, tenons or shoulders) with 1/8" roundover bit.
2. NOTE: Mortises are tapered as shown. Wedges driven into kerfs during assembly will tighten joints.

**Notes: Wedges - 24 Pieces**

1. Cut wedges 2" longer than the tenon and taper from 0" to 5/16" over the depth of the mortise.
2. Mortises vary in depth depending on location. Verify that wedges are 5/16" at depth of mortise.